



1

## LET'S GET SOCIAL!

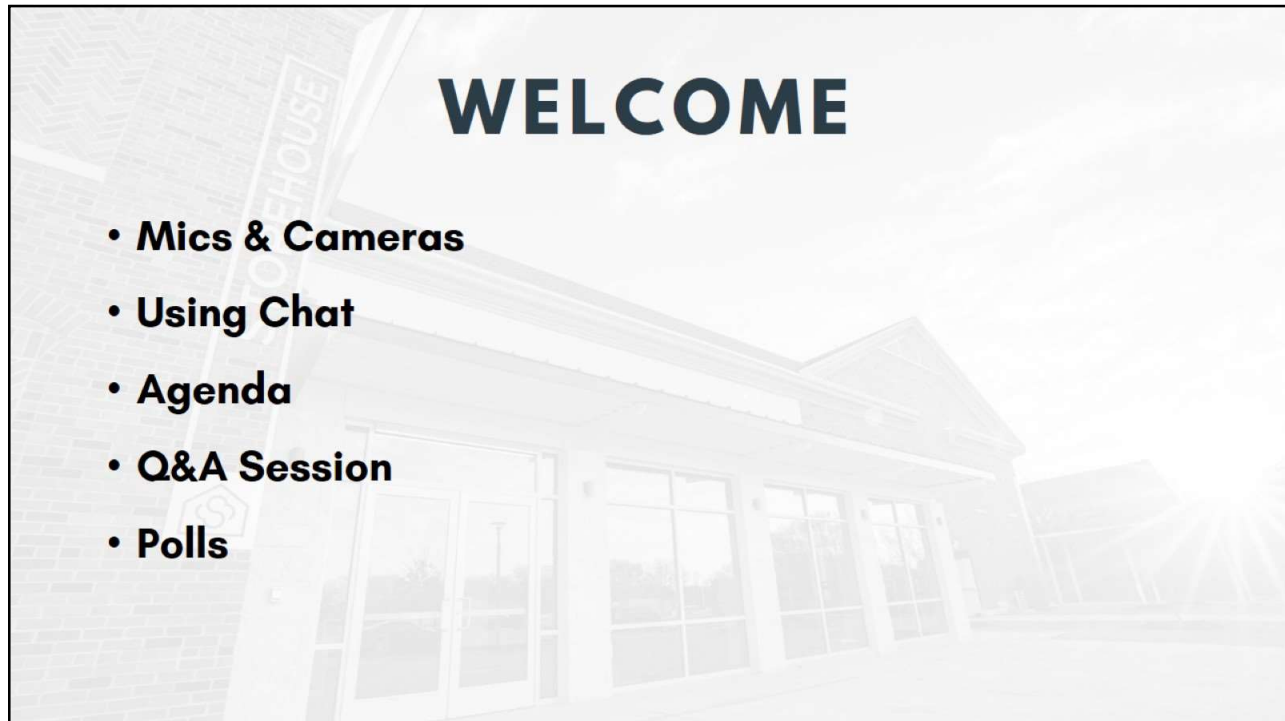


Snap a photo of you and your household or viewing party and post it on social:

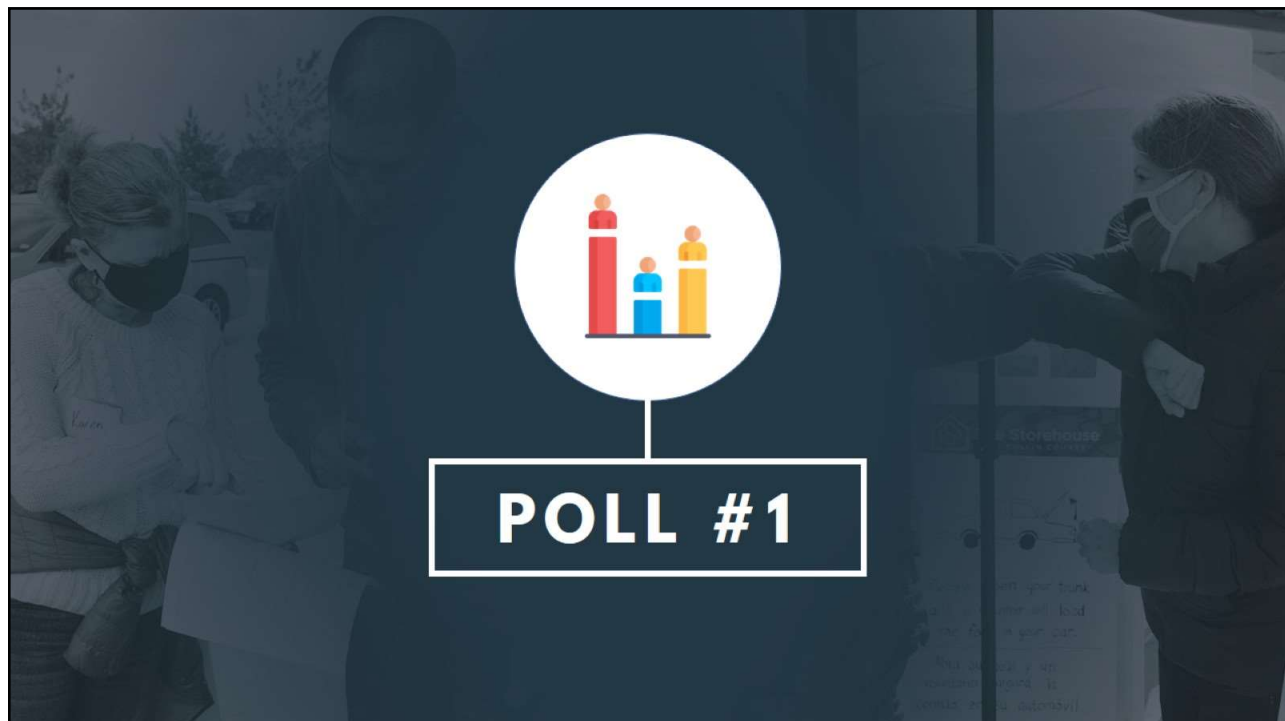
-  **@The Storehouse of Collin County**
-  **@TheStorehouseCC**
-  **@TheStorehouseCC**

Tag us using the hashtag:  
**#stateofthestorehouse**

2



3



4



5



6

## WHAT ARE OUR RESOURCES?



**PLACE:**  
New Space



**PROCESS:**  
Updated  
Procedures



**PEOPLE:**  
Expanded  
Leadership

7

## PLACE: OUR MOVING SCHEDULE

- First service week will be:  
**Thursday, February 13 & Saturday, February 15**
- “Soft openings”
- Thursday, Feb 13: Seven Loaves Only – 1<sup>st</sup> Floor
- Saturday, Feb 15: Seven Loaves – 1<sup>st</sup> Floor & Joseph’s Coat – Festival Hall

8



## PROCESSES: UPDATED PROCEDURES

- Interviews have been conducted with tenured volunteers to develop processes for each area
- Continual improvement focus throughout 2020
- Work with Toyota

9

## PEOPLE: STAFF



**Jeff Morton**  
Director of  
Operations



**Christi Ferrell**  
Director of  
Joseph's Coat



**Jackie Welchman**  
Director of  
Project Hope

10



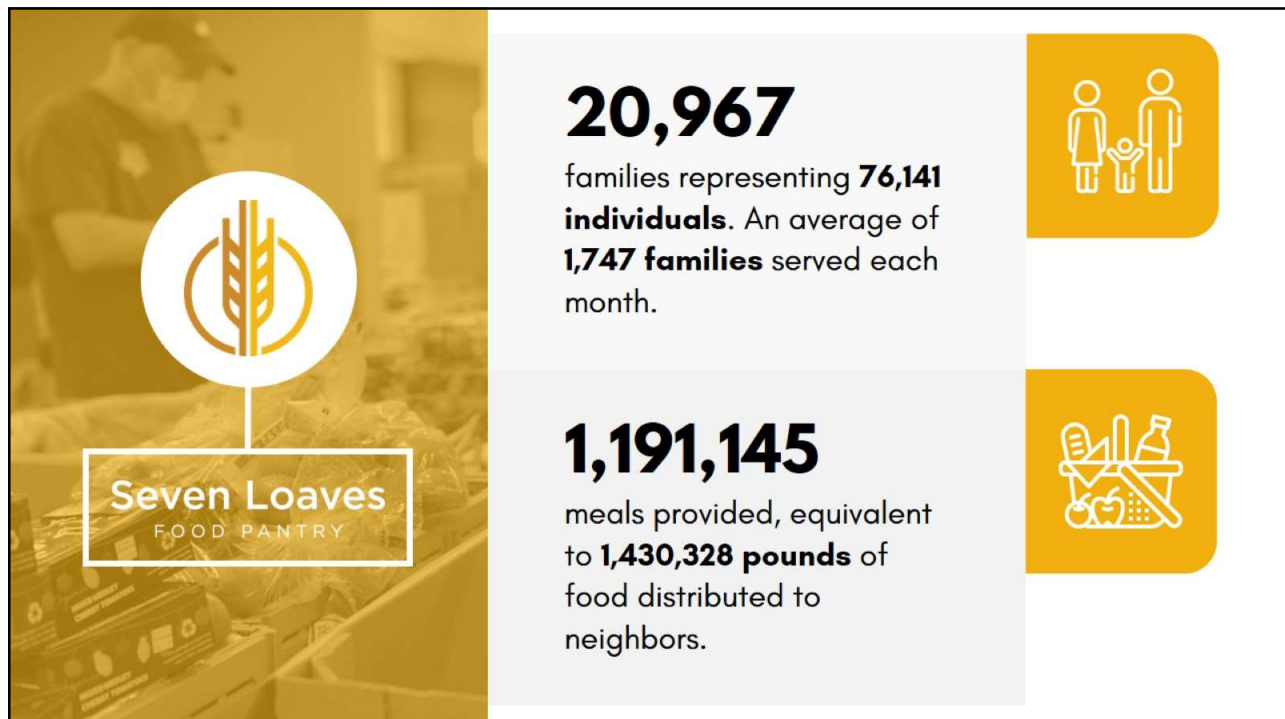
11



12



13



14





15



16

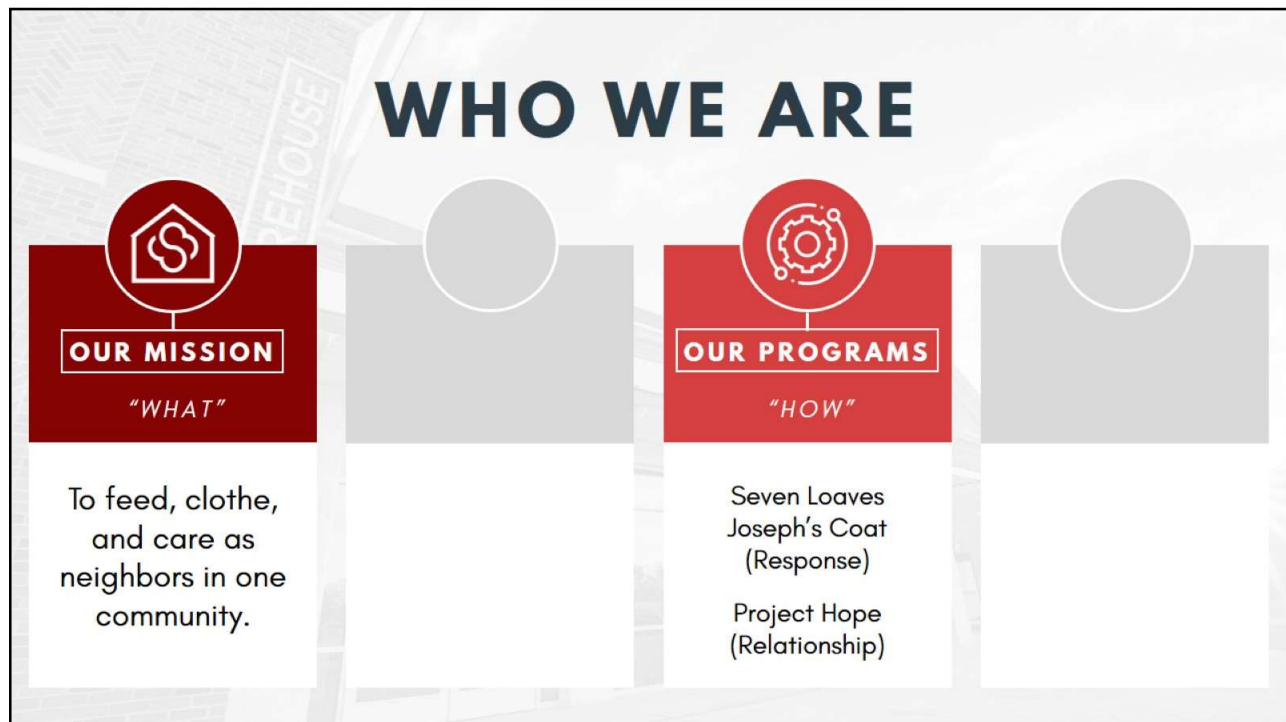




17



18



19



20



**“We are not only in the  
food pantry or clothes closet  
‘business,’ we are in the  
**transformation**  
‘business.’”**

21



**2021 VISION**

22

# 2021 ASSUMPTIONS

**Covid** is active the first 6 months of the year



We will not return to where we were, but a **"new normal"**



Each day, we need to live out our **mission**, **vision** and **core values**



23

# OUR 2021 STRATEGY



## ASSESSMENT

Continual  
assessment of  
our neighbors'  
needs



## INTEGRATION

Further  
integration of  
Storehouse  
programs



## STEWARDSHIP

Stewardship of  
greatest  
commodities -  
people & funds

24

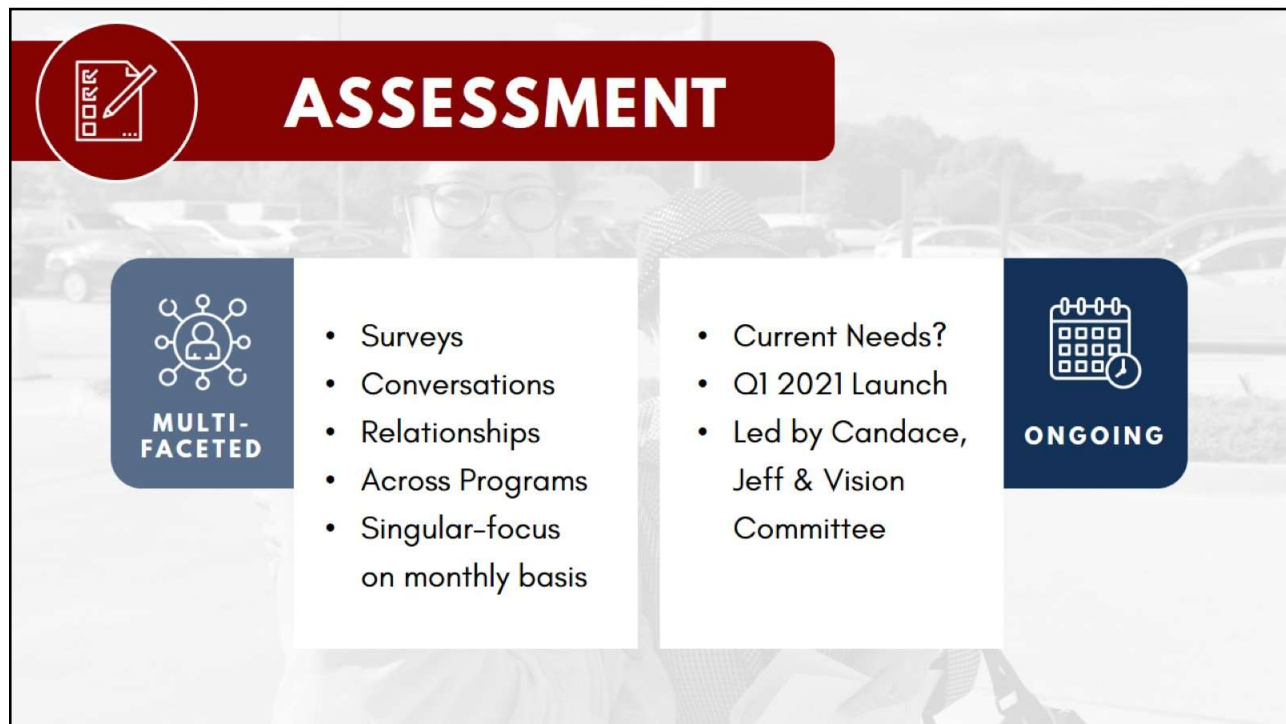




25



26



27



28



29



30





## JOHN HORAN

- Director of Seven Loaves, effective January 1, 2021
- 33 Year Career at Texas Instruments
- Volunteer since 2017

31

# INTEGRATION: PEOPLE

 <p><b>OUR MISSION</b></p> <p>"WHAT"</p> <p>To feed, clothe, and care as neighbors in one community.</p>	 <p><b>OUR VISION</b></p> <p>"WHY"</p> <p>To transform the life trajectory of <b>20%</b> of our neighbors.</p>	 <p><b>OUR PROGRAMS</b></p> <p>"HOW"</p> <p>Seven Loaves Joseph's Coat (Response)</p> <p>Project Hope (Relationship)</p>	 <p><b>OUR VALUES</b></p> <p>"HOW"</p> <p><b>Engagement</b></p> <p><b>Empathy</b></p> <p><b>Encouragement</b></p>
---------------------------------------------------------------------------------------------------------------------------------------------------------------------------------------------	---------------------------------------------------------------------------------------------------------------------------------------------------------------------------------------------------	--------------------------------------------------------------------------------------------------------------------------------------------------------------------------------------------------------------	--------------------------------------------------------------------------------------------------------------------------------------------------------------------------------------------------------

32



# CORE VALUES

## ENGAGEMENT

Doing all work “all in”  
with excellence

### Colossians 3:23

Whatever you do,  
work at it with all your  
heart, as working for  
the Lord, not for  
human masters.

## EMPATHY

Seeking to understand others  
before being understood

### Galatians 6:2

Bear one another's  
burdens, and so  
fulfill the law of  
Christ.

## ENCOURAGEMENT

Striving to be positive  
force in our community

### 1 Thessalonians 5:11

Therefore, encourage  
one another and build  
each other up, just as in  
fact you are doing.

33



## STEWARDSHIP

Continue providing **volunteer experience** that  
is meaningful, interactive, and safe.



Focus on **diversity, equity, and inclusion** for  
all aspects of The Storehouse.



Strengthening **fundraising** with foundations  
and major donors for sustainability & growth.



34



35



36